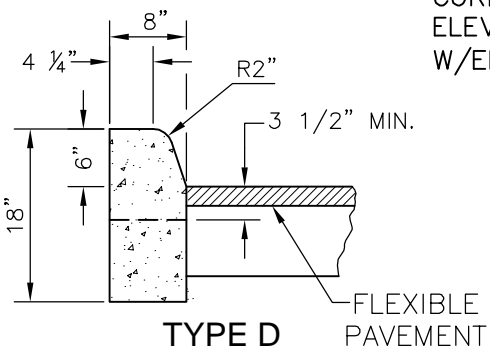


SAME SLOPE AS ADJACENT EDGE OF PAVEMENT

**TYPE A**

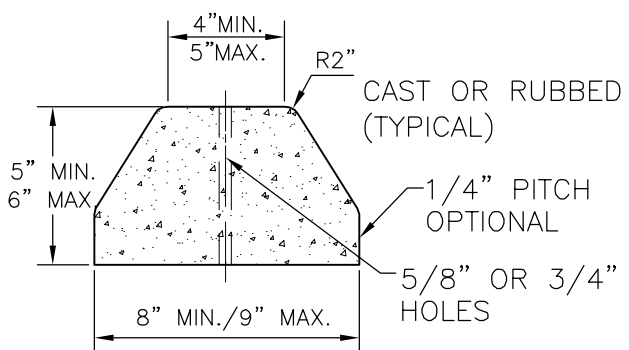
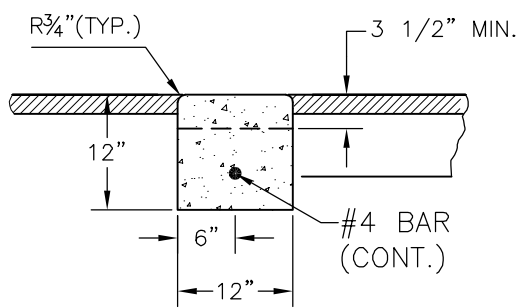
**TYPE B**

SURFACE ON LOW EDGE OF PAVEMENT TO BE 1/4" ABOVE LIP OF CURB. SURFACE ON HIGH SIDE OF PAVEMENT TO BE FLUSH WITH LIP OF CURB. IF BOTH EDGES ARE AT SAME ELEVATION, SURFACE SHOULD BE FLUSH W/EDGE OF PAVEMENT.

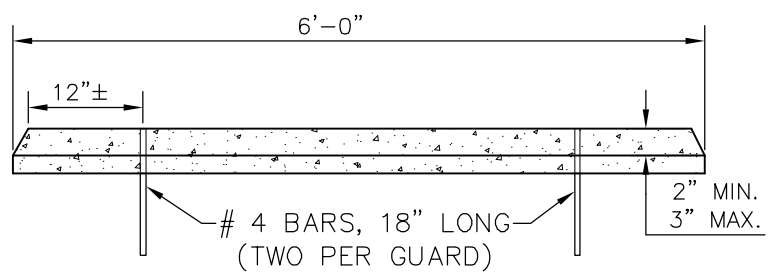


**TYPE D**

**HEADER CURB**



**CONCRETE BUMPER GUARD**



1. ULTIMATE STRENGTH OF CONCRETE FOR CURBS & BUMPERS SHALL BE 2,500 P.S.I. @ 28 DAYS.
2. 1/8" - 1/4" CONTRACTION JOINTS IN CURBS SHALL BE 3 1/2" MIN. DEPTH (AS MEASURED FROM TOP OF ADJACENT PAVEMENT) AND AT 10-FOOT CENTERS. NO SECTION SHALL BE LESS THAN 4 FEET.
3. WHEN PAVEMENT IS CONCRETE, PROVIDE A 1/2" EXPANSION JOINT WITH PRE-FORMED JOINT FILLER & JOINT SEAL BETWEEN CURB AND CONCRETE PAVEMENT. (1 1/2" TAPER ON CURB FACE NOT REQUIRED AT CONCRETE PAVEMENT.)
4. ENDS OF TYPE "B" AND "D" CURB SHALL TRANSITION FROM FULL HEIGHT TO ZERO IN 3 FEET.

REVISED: SEPT-2009	GENERAL CONSTRUCTION - CONCRETE CURB & GUTTER	STANDARD DETAIL
ISSUED: SEPT - 2009	CITY OF WEST PALM BEACH ENGINEERING SERVICES DEPT.	GC-3