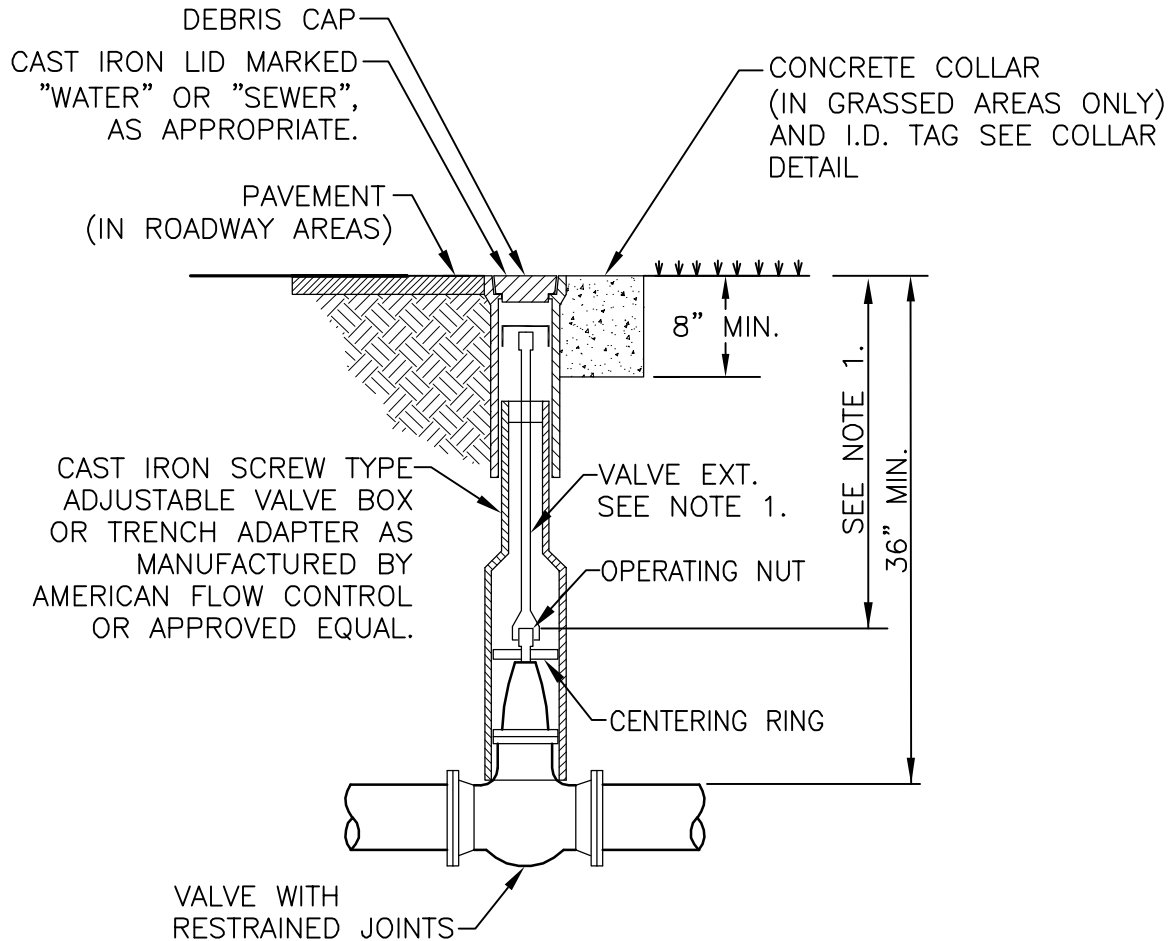
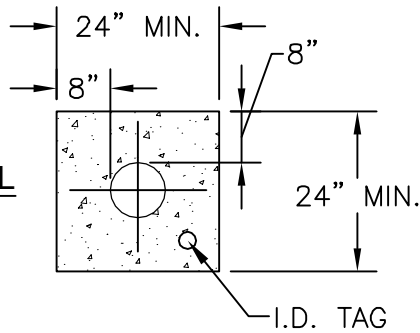


COLLAR DETAIL



1. WHEN TOP OF OPERATING NUT IS DEEPER THAN 36", A HIGH STRENGTH STEEL EXTENSION WILL BE REQUIRED TO BRING OPERATING NUT TO NOT MORE THAN 24" BELOW FINISHED GRADE. EXTENSION BOLTS & NUTS SHALL BE 316 STAINLESS STEEL. A STEEL CENTERING PLATE WELDED TO THE EXTENSION IS ALSO REQUIRED.
2. VALVE BOXES IN PAVEMENT SHALL HAVE LOCKING COVERS & LIDS MARKED "WATER" OR "SEWER", AS APPROPRIATE.
3. ALL VALVE BOXES SHALL BE PROVIDED WITH A DEBRIS CAP.
4. A PLUMB DUCTILE IRON PIPE OR C-900 PVC RISER SHALL BE USED IF DEPTH SO REQUIRES, WITH APPROVAL.

REVISED: SEPT-2009	PRESSURE PIPE - VALVE BOX SETTING	STANDARD DETAIL
ISSUED: SEPT - 2009	CITY OF WEST PALM BEACH ENGINEERING SERVICES DEPT.	P-1