

NOTE:

UNISTRUT HEIGHT SHALL BE CONSISTENT WITH ALL LOCAL AGENCY REGULATIONS & FPL REQUIREMENTS.

1 1/4" DIA. 20' GALV. STEEL PIPE FOR TELEMETRY ANTENNA.

(2) 1 1/4" S.S. STRAPS (EA. SIDE)

6 ft. CHAIN LINK FENCE

PVC SLEEVE EMBEDDED IN CONCRETE.

WELDED WIRE IN FABRIC 6x6/10x10

EXPANSION JOINT (TYP.)

POSTS CORED & GROUTED

POURED CONC. BASE (TYP.)

APPROVED PRESSURE TYPE BRONZE CONNECTOR CLAMP. PROVIDE #4 COPPER WIRE. DRIVE SO THAT TOP IS ACCESSIBLE THROUGH ELECT. METER BOX. GROUND ROD TO BE 3/4" DIA. x 20 ft. COPPER CLAD.

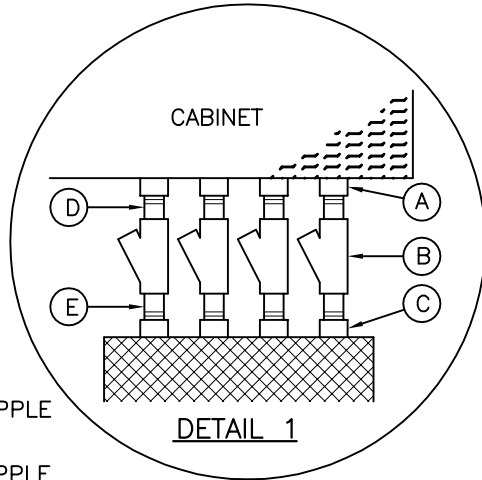
(A) UNION: UNY100NR-A 1"

(B) SEALING FITTING: BYSF-100AL 1" FILL SEAL FITTING WITH SILICONE

(C) UNION: UNY100NR-A 1"

(D) 1" X 2" ALUM. NIPPLE

(E) 1" X 2" ALUM. NIPPLE



DETAIL 1

3" x 1/4" THICK ALUMINUM PIPE SUPPORTS FILL WITH CLEAN SAND & CAP. COAT ANY SURFACE IN CONTACT W/CONC. WITH 8 mm THICK BITUMASTIC PAINT.

SEE NOTE 11

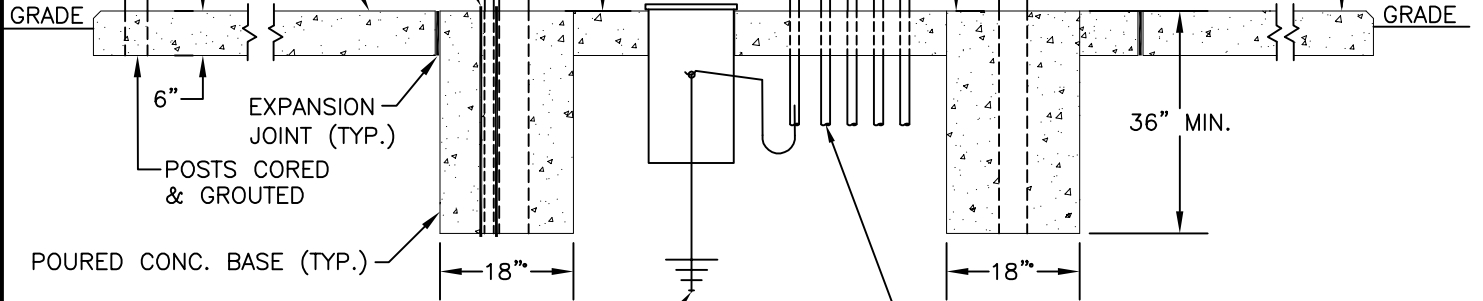
10"H x 6"D x 24"W S.S. WIRE WAY WITH HINGED GASKETED COVER FOR CONNECTIONS (SEE DETAIL 1).

30" MIN.

12" MIN.

36" MIN.

PROVIDE SCHED. 80 PVC CONDUIT. WIRE SHALL BE CONTINUOUS WITH NO SPLICES. MIN. COVER TO BE 2'-3".



<p>REVISED: SEPT-2009</p>	<p>SUBMERSIBLE LIFT STATION - ELECTRICAL PANELS, ELEVATION</p>	<p>STANDARD DETAIL</p>
<p>ISSUED: SEPT - 2009</p>	<p>CITY OF WEST PALM BEACH ENGINEERING SERVICES DEPT.</p>	<p>SLS-7</p>