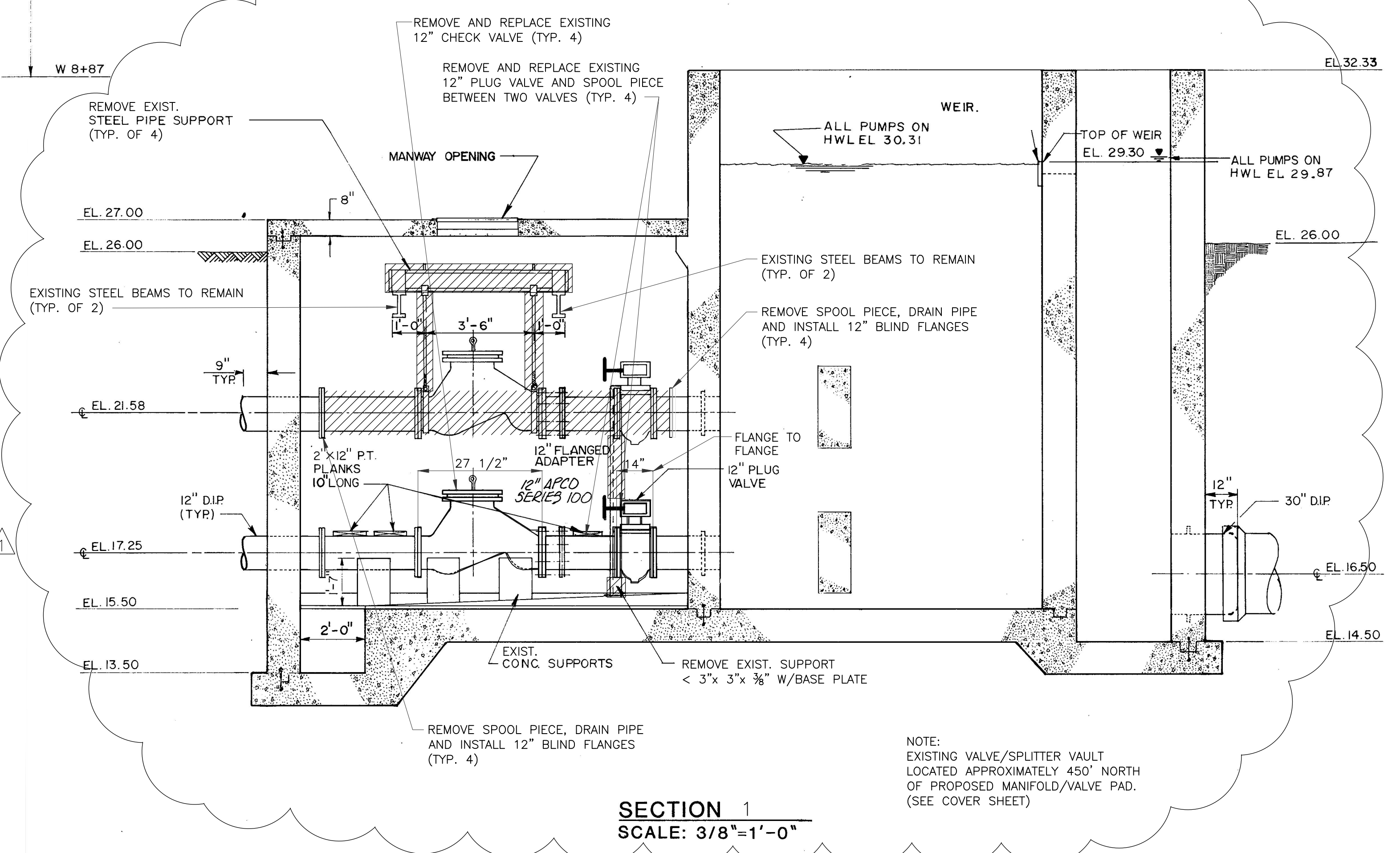


**PLAN**  
**EXISTING VALVE / SPLITTER VAULT**  
 SCALE: 3/8"=1'-0"

- NOTES:**
1. CONTRACTOR TO COORDINATE WORK WITHIN VAULT W/ECR OPERATIONS.
  2. COORDINATE WORK WITHIN VAULT WITH THE SCHEDULE FOR OTHERS TO TAKE THE EQ. BASIN OUT OF SERVICE FOR STRUCTURAL REPAIRS.
  3. CONTRACTOR SHALL PREP AND COAT ALL REMAINING EXISTING AND PROPOSED PIPE, VALVES, BEAMS, SUPPORTS, HANGERS AND APPURTENANCES IN ACCORDANCE WITH SPEC SECTION 09900.
  4. ALL ACCESS INTO VAULT SHALL MEET PERTINENT OSHA AND ECR SAFETY REQUIREMENTS.
  5. REMOVE W6x16 BEAMS, CLEVIS HANGER AND RODS (TYP. FOR 4 SETS)
  6. CONTRACTOR WILL BE RESPONSIBLE TO DRAIN PIPE AND VAULT AND CLEAN VAULT FOR ACCESS INTO IT.
  7. REPLACE CHECK VALVE WITH APCO SERIES 100 SWING CHECK VALVE AND PLUG VALVE WITH DEZURIK PLUG VALVE. SEE SPECIFICATIONS. MEASURE EXISTING DIMENSIONS TO ENSURE VALVES WILL FIT IN EXISTING SPACE PRIOR TO ORDERING NEW VALVES.



**SECTION 1**  
 SCALE: 3/8"=1'-0"

Date:	8/19/2011
Scale:	N/A
Design By:	DX
Drawn By:	PRC
Check By:	XX
12/6/2011	DX ADDENDUM 1
DATE	BY REVISIONS

**EAST CENTRAL REGIONAL WATER RECLAMATION FACILITY (ECRWF) OPERATIONS BOARD**  
**FLOW EQUALIZATION BASIN**  
**RETURN FLOW PIPING SYSTEM IMPROVEMENTS**

**VALVE VAULT**  
**PLAN AND SECTION**

**HOLTZ CONSULTING ENGINEERS, INC.**  
 50 SOUTH US HIGHWAY ONE, SUITE 206  
 JUPITER, FLORIDA 33477  
 PH. (561) 575-2005  
 Cert. No. 26960

DAVID XAVIER, P.E.  
 License No. 55308

**SHEET 8**