

Sustainability Tools for Assessing and Rating Communities ("STAR")

Sustainability Advisory Committee

April 5, 2016



WEST PALM BEACH



STAR Milestones



WEST PALM BEACH



June 2015

Membership:

- Became a STAR Member Community.
- 3 levels of membership:
 1. ~~Participating~~ - Self reporting,
 2. **Reporting**- Certification/verification,
 3. **Leadership**- Certification/verification (with bells and whistles).

Built Environment	Climate & Energy	Economy & Jobs	Education, Arts & Community	Equity & Empowerment	Health & Safety	Natural Systems
Ambient Noise & Light	Climate Adaptation	Business Retention & Development	Arts & Culture	Civic Engagement	Active Living	Green Infrastructure
Community Water Systems	Greenhouse Gas Mitigation	Green Market Development	Community Cohesion	Civil & Human Rights	Community Health & Health System	Invasive Species
Compact & Complete Communities	Greening the Energy Supply	Local Economy	Educational Opportunity & Attainment	Environmental Justice	Emergency Prevention & Response	Natural Resource Protection
Housing Affordability	Industrial Sector Resource Efficiency	Quality Jobs & Living Wages	Historic Preservation	Equitable Services & Access	Food Access & Nutrition	Outdoor Air Quality
IB&R Redevelopment	Resource Efficient Buildings	Targeted Industry Development	Social & Cultural Diversity	Human Services	Indoor Air Quality	Water in the Environment
Public Spaces	Resource Efficient Public Infrastructure	Workforce Readiness		Poverty Prevention & Alleviation	Natural & Human Hazards	Working Lands
Transportation Choices	Waste Minimization					

August 2015-Present

Evaluation:

- **Crosswalk**- completed spreadsheet consisting of 749 rows and 2,247 cells for online data entry. Additional development of 749 narratives for actions.
- **Online Reporting Tool**- conversion of all data into reporting tool – over 2,000 individual entry cells.



In September 2016

Certification/ Verification:

- Will submit data in spreadsheet and online reporting tool for scoring.
- **Verification**- staff of the STAR organization then verify all information. Resubmittal for certain credits then occurs based on initial verification.

STAR Focus Areas and Objectives



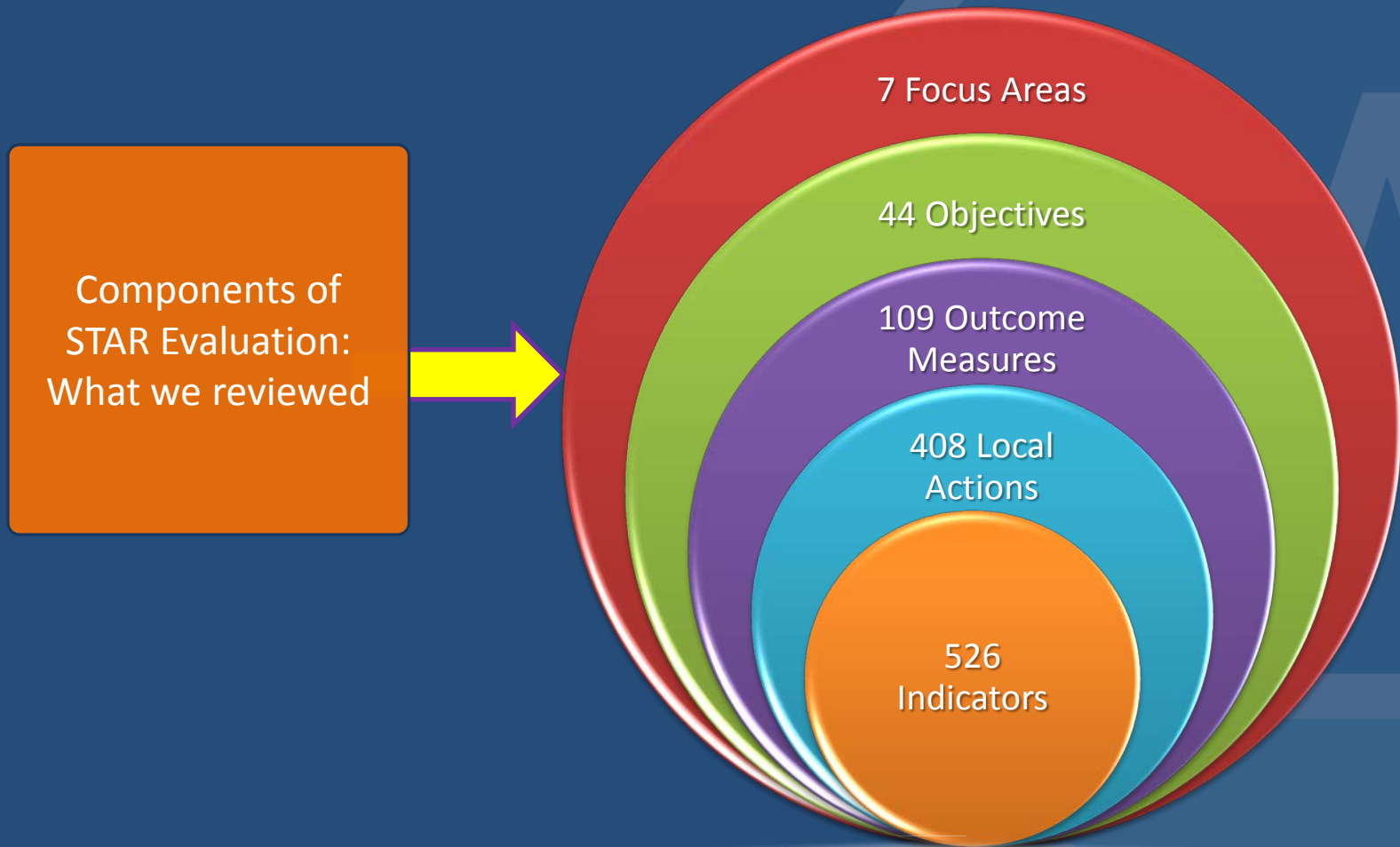
WEST PALM BEACH

Built Environment	Climate & Energy	Economy & Jobs	Education, Arts & Community	Equity & Empowerment	Health & Safety	Natural Systems
Ambient Noise & Light	Climate Adaptation	Business Retention & Development	Arts & Culture	Civic Engagement	Active Living	Green Infrastructure
Community Water Systems	Greenhouse Gas Mitigation	Green Market Development	Community Cohesion	Civil & Human Rights	Community Health & Health System	Invasive Species
Compact & Complete Communities	Greening the Energy Supply	Local Economy	Educational Opportunity & Attainment	Environmental Justice	Emergency Prevention & Response	Natural Resource Protection
Housing Affordability	Industrial Sector Resource Efficiency	Quality Jobs & Living Wages	Historic Preservation	Equitable Services & Access	Food Access & Nutrition	Outdoor Air Quality
Infill & Redevelopment	Resource Efficient Buildings	Targeted Industry Development	Social & Cultural Diversity	Human Services	Indoor Air Quality	Water in the Environment
Public Spaces	Resource Efficient Public Infrastructure	Workforce Readiness		Poverty Prevention & Alleviation	Natural & Human Hazards	Working Lands
Transportation Choices	Waste Minimization				Safe Communities	

STAR Framework



WEST PALM BEACH



Preliminary STAR Score: 401.2



WEST PALM BEACH

Low Score

High Score

Education, Arts
& Community

53.1/70

Economy & Jobs

67.4/100

Health

/100

Climate

00

Built Env

/100

Natural Systems

57/100

Equity &
Empowerment

43.1/100

401.2 = 4-STAR Community
(400-599 pts.)

*This is preliminary, may not meet cutoff for 4-STAR;
May be very high 3-STAR.

Community Comparisons



WEST PALM BEACH



109 Total Communities Involved in STAR

(Lee County, Broward County, Sarasota County, Monroe County, Marathon, Hollywood, Bonita Springs, Palm Bay, Coral Gables, Islamorada, St. Petersburg, & West Palm Beach currently in FL)

Fayetteville, NC; Houston, TX; Indianapolis, IN; Santa Fe, NM; Lee County, FL; Monroe County, FL; Palm Bay, FL; Park Forest, IL; Phoenix, AZ; Reading, PA; Riverside, CA; Rosemount, MN; St. Louis, MO; Wichita, KS & Woodbridge Township, NJ

200-399 Points

Louisville, KY; Memphis, TN; Plano, TX; Portland, OR; Raleigh, NC; Tacoma, WA; Tucson, AZ & Washington, DC

400-599 Points

STAR and Strategic Planning



WEST PALM BEACH

- Several communities are using the STAR framework to guide comprehensive and strategic planning processes

- Case Studies Nationally:

- **Austin, TX: 4-STAR Community**

- Integrated STAR framework into its Imagine Austin comprehensive plan
 - Imagine Austin actively guided city's long-range CIP strategic planning



- **Plano, TX: 4-STAR Community**

- Completed comprehensive plan update simultaneous with STAR certification
 - Many objectives within the STAR framework were incorporated into the Plano Tomorrow plan
 - Using the data collected through STAR to evaluate success of Plano Tomorrow's implementation over the long term





Areas Where City Could Improve:

- **Promote creative industries to achieve 5% representation among businesses within City.**
- **Promote increased attendance and participation at live performing arts events and museums to meet a 35% attendance rate at events and 25% rate of museum attendance annually.**
- **Track participation and attendance at major community arts and cultural events.**
- **Hire local artists to create artwork, sculptures or perform in public places.**
- **Adopt a historic preservation plan to establish community priorities for preservation.**
- **Require racial and ethnic diversity on City advisory boards and commissions that is reflective of community diversity.**
- **Conduct an assessment of City's social and cultural diversity to inform government action.**
- **Provide leadership and training programs that encourage and support diverse representation on local boards and commissions.**



Areas Where City Could Improve:

- Promote purchasing preference for locally-produced goods and services.
- Provide incentives to businesses that use materials produced within the region and sell within the region.
- Implement efforts to increase the median household income within the City to meet or exceed the living wage standard for 80% of households in the City.
- Enact and enforce a living wage policy for City employees and contractors.
- Coordinate or support local and regional associations of formal networks of related businesses in the City's target industry sectors.
- Provide capacity building services and support for professionals in emerging and existing target industry sectors.
- Work towards improving workforce training outcomes over the next three years.
- Provide support services and training tailored to the needs of the local workforce.
- Create a workforce development committee.



Areas Where City Could Improve:

- **Achieve recognition as a Bicycle-Friendly Community or Walk-Friendly Community.**
- **Adopt a health in all policies statement or policy commitment for local decision-making.**
- **Demonstrate that 90% of emergency response times are in compliance with National Fire Protection Association standards.**
- **Develop a NIMS-compliant local inventory of assets and resources available for emergency response and mutual aid requests.**
- **Publish information to encourage residents to develop emergency kits, evacuation plans.**
- **Participate in a regional emergency planning commission.**
- **Perform an annual review or assessment of plans, procedures, resources and trainings based on emergency response incidents and demands.**
- **Conduct an assessment of local food system, including increased access to healthful food.**
- **Adopt regulations to discourage/prohibit unhealthful foods/beverages.**
- **Reduce or eliminate toxic pesticide use in City-owned or managed buildings through integrated pest management techniques.**



Areas Where City Could Improve:

- **Require that internal decisions by City departments use most current climate science and that staff monitor climate change impacts.**
- **Adopt regulations that address future climate change threats.**
- **Require that GHG emissions be considered in broader City planning processes (e.g. strategic plan or capital improvements/budget process).**
- **Adopt energy efficiency regulations for buildings in the City (e.g. LEED).**
- **Implement specific programs or create facility upgrades to reduce waste in the City (e.g. product bans, public education campaigns, targeted recycling, etc.).**
- **Create a policy to ensure the City's transportation and non-transportation supplies come increasingly from renewable and alternative fuel supplies.**
- **Remove zoning, height or other restrictions on development of small-scale renewable.**
- **Enhance efforts to reduce water consumption in the City's industrial sector.**
- **Develop a program to train inspectors to enforce water and energy efficient standards.**



Areas Where City Could Improve:

- Show progress toward light reduction targets and a sky glow at or below 4 on the Bortle Dark-Sky (e.g. enforce light standards and eliminate light pollution from City facilities).
- Shift toward full cost water pricing system and create a program to guarantee the provision of water to low-income residents.
- Increase efforts to make the City more walkable (e.g. require walkability standards).
- Enhance affordable housing initiatives (e.g. develop a comprehensive housing strategy, work with other jurisdictions to address affordable housing, and work with private employers to provide live-near-your work or employer-assisted housing incentives).
- Increase the percentage of new development in infill and redevelopment areas; work toward demonstrating that 75% of new housing units utilize existing water and sewer lines.
- Further incentivize alternative transportation to meet specific mode split totals (e.g. 60% drive alone maximum; 25% bike & walk & transit; 5% bike & walk).
- Improve bicycle and pedestrian network (e.g. become a Bicycle Friendly Community or Walk Friendly Community, improve safety through enforcement programs, increase mileage of bike lanes and shared use paths).



Areas Where City Could Improve:

- Create incentive programs to encourage land owners to adopt green infrastructure practices.
- Establish a green infrastructure monitoring program and increase the percentage of funding in green infrastructure.
- Enhance invasive species prevention, containment and eradication programs in the City.
- Develop a community-wide invasive species integrated pest management plan.
- Enforce regulations to control the use and sale of listed invasive species.
- Ensure that all City-owned buildings use native plants or non-invasive species.
- Create an advisory board to inform land conservation and restoration activities.
- Restore, maintain and monitor conserved natural lands to increase natural resource resilience, adaptability and biological integrity.
- Enforce anti-idling regulations to prevent emissions of excess pollution.
- Increase mileage of sidewalks and dedicated bicycle infrastructure connecting destinations.
- Provide incentives to residents/developers to protect critical watershed protection areas.



Areas Where City Could Improve:

- Conduct a survey to determine what percentage of City residents believe that they can have a positive impact on their community.
- Provide training to City departments on successful public engagement techniques.
- Establish an independent civil and/or human rights commission to ensure access, equity and inclusion.
- Operationalize the City's human and civil rights policies in programs, services, operations.
- Adopt an equity plan that evaluates current conditions in the community and establishes targets to improve equitable access.
- Work toward reducing the percentage of priority populations who need assistance obtaining human services.
- Demonstrate a decrease in the percentage of residents living below the poverty line from at least 3 population subgroups.
- Adopt a community-wide plan to reduce poverty.

Next Steps



WEST PALM BEACH

- Complete (Quickly!) all data collection
- Make recommendations on “quick and easy” actions to improve score:
 - Policies
 - Programs
- Estimate points gained from new action items
- Make “Go/No Go” decision on STAR certification submittal for this membership year